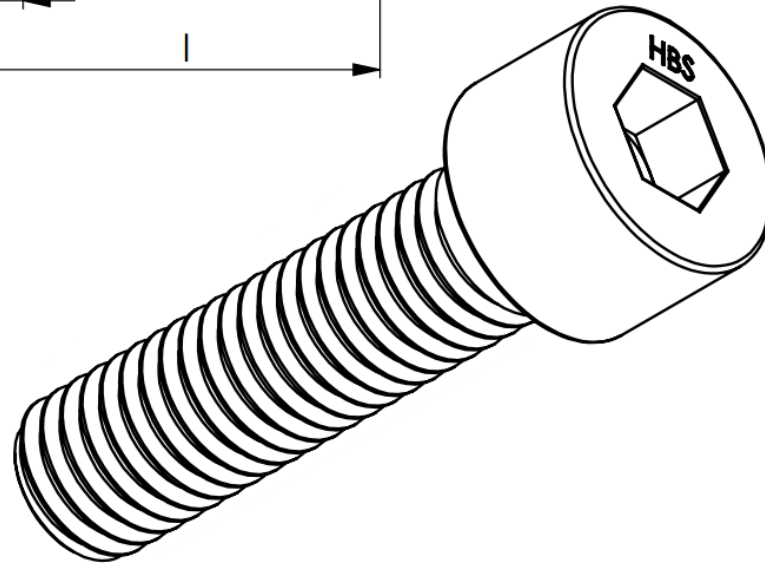
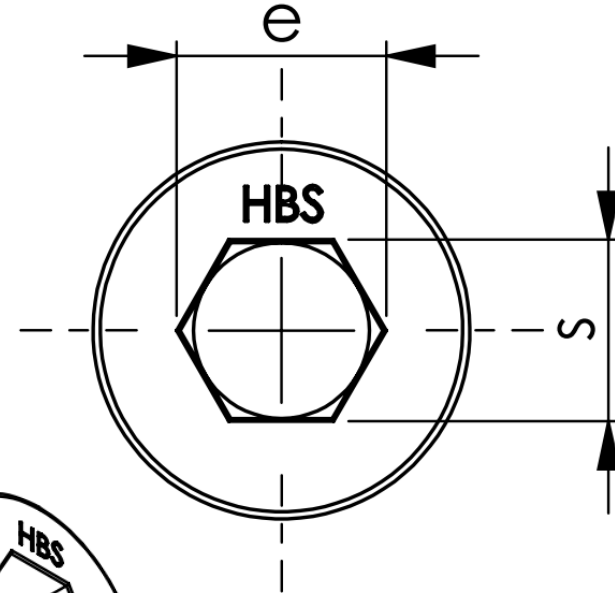
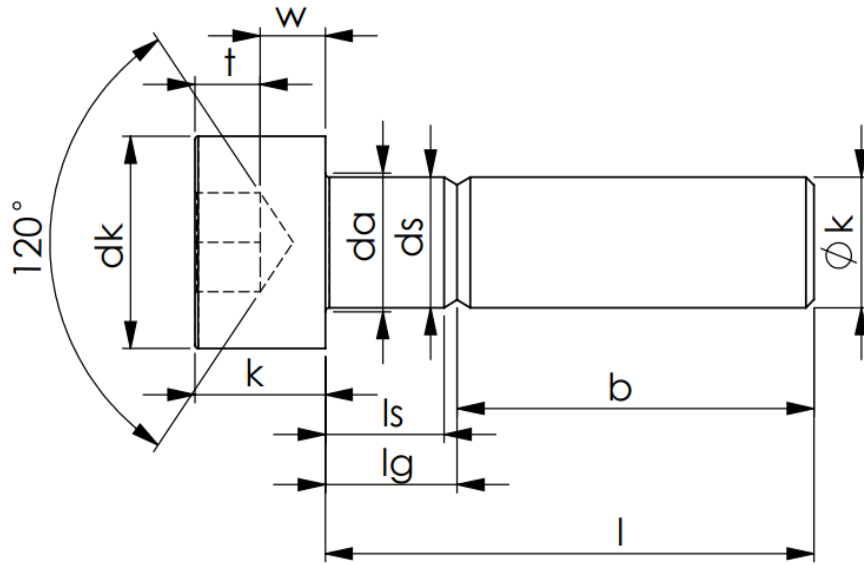


Hexagon socket Head Cap Screws

DIN 912; ISO 4762; CSN 021143; PN 82302; UNI 5931;



- d** : Thread Nominal Diameter
- k** : Head Height
- t** : Groove Depth
- dk**: Head Diameter
- L** : Bolt Length
- s** : Width across flat
- e** : Width across corner

Thread d		M1.6	M2	M2.5	M3	M4	M5	M6	M8	M10	M12	M14	M16	M20	M24	M30	M36	M42	M48	M56	M64	
p		0.35	0.4	0.45	0.5	0.7	0.8	1	1.25	1.5	1.75	2	2	2.5	3	3.5	4	4.5	5	5.5	6	
b		15	16	17	18	20	22	24	28	32	36	40	44	52	60	72	84	96	108	124	140	
dk	max.	3	3.8	4.5	5.5	7	8.5	10	13	16	18	21	24	30	36	45	54	63	72	84	96	
	Groov head	3.14	3.98	4.68	5.68	7.22	8.72	10.22	13.27	16.27	18.27	21.33	24.33	30.33	36.39	45.39	54.46	63.46	72.46	84.54	96.54	
	min.	2.86	3.62	4.32	5.32	6.78	8.28	9.78	12.73	15.73	17.73	20.67	23.67	29.67	35.61	44.61	53.54	62.54	71.54	83.46	95.46	
da	max.	2	2.6	3.1	3.6	4.7	5.7	6.8	9.2	11.2	13.7	15.7	17.7	22.4	26.4	33.4	39.4	45.6	52.6	63	71	
ds	max.	1.6	2	2.5	3	4	5	6	8	10	12	14	16	20	24	30	36	42	48	56	64	
	min.	1.46	1.86	2.36	2.86	3.82	4.82	5.82	7.78	9.78	11.73	13.73	15.73	19.67	23.67	29.67	35.61	41.61	47.61	55.54	63.54	
e	min.	2	2	2	3	3	5	6	7	9	11	14	16	19	22	25	31	37	41	47	53	
h	max.	0.34	0.51	0.51	0.51	0.6	0.6	0.68	1.02	1.02	1.45	1.45	1.45	2.04	2.04	2.89	2.89	3.06	3.91	5.95	5.95	
k	max.	1.6	2	2.5	3	4	5	6	8	10	12	14	16	20	24	30	36	42	48	56	64	
	min.	1.46	1.86	2.36	2.86	3.82	4.82	5.7	7.64	9.64	11.57	13.57	15.57	19.48	23.48	29.48	35.38	41.38	47.38	55.26	63.26	
r	min.	0.1	0.1	0.1	0.1	0.2	0.2	0.25	0.4	0.4	0.6	0.6	0.6	0.8	0.8	1	1	1.2	1.6	2	2	
s	nominal	1.5	1.5	2	2.5	3	4	5	6	8	10	12	14	17	19	22	27	32	36	41	46	
	max.	1.58	1.58	2.08	2.58	3.08	4	5.14	6.14	8	10	12	14	17.23	19	22	27	32.33	36.33	41.33	46.33	
	min.	1.52	1.52	2.02	2.52	3.02	4	5.02	6.02	8	10	12	14	17.05	19	22	27	32.08	36.08	41.08	46.08	
t	min.	0.7	1	1.1	1.3	2	2.5	3	4	5	6	7	8	10	12	15.5	19	24	28	34	38	
v	max.	0.16	0.2	0.25	0.3	0.4	0.5	0.6	0.8	1	1.2	1.4	1.6	2	2.4	3	3.6	4.2	4.8	5.6	6.4	
dw	min.	2.72	3.48	4.18	5.07	6.53	8.03	9.38	12.33	15.33	17.23	20.17	23.17	28.87	34.81	43.61	52.54	61.34	70.34	82.26	94.26	
w	min.	0.55	0.55	0.85	1.15	1.4	1.9	2.3	3.3	4	4.8	5.8	6.8	8.6	10.4	13.1	15.3	16.3	17.5	19	22	

Thread d			M1.6		M2		M2.5		M3		M4		M5		M6		M8		M10		M12	
l			ls	lg	ls	lg	ls	lg	ls	lg	ls	lg	ls	lg	ls	lg	ls	lg	ls	lg	ls	lg
nominal	min.	max.	min.	max.	min.	max.	min.	max.	min.	max.	min.	max.	min.	max.	min.	max.	min.	max.	min.	max.	min.	max.
2.5	2.3	2.7	Full																			
3	2.8	3.2	Full																			
4	3.76	4.24	Full																			
5	4.76	5.24	Full																			
6	5.76	6.24	Full																			
8	7.71	8.29	Full																			
10	9.71	10.29	Full																			
12	11.65	12.35	Full																			
16	15.65	16.35	Full																			
20	19.58	20.42			2	4	Full															
25	24.58	25.42					5.75	8	4.5	7	Full											
30	29.58	30.42							9.5	12	6.5	10	4	8	Full							
35	34.5	35.5									11.5	15	9	13	6	11	Full					
40	39.5	40.5									16.5	20	14	18	11	16	5.75	12	Full			
45	44.5	45.5											19	23	16	21	10.75	17	5.5	13	Full	
50	49.5	50.5											24	28	21	26	15.75	22	10.5	18		
55	54.4	55.6													26	31	20.75	27	15.5	23	10.25	19
60	59.4	60.6													31	36	25.75	32	20.5	28	15.25	24
65	64.4	65.6															30.75	37	25.5	33	20.25	29
70	69.4	70.6															35.75	42	30.5	38	25.25	34
80	79.4	80.6															45.75	52	40.5	48	35.25	44
90	89.3	90.7																	50.5	58	45.25	54
100	99.3	100.7																	60.5	68	55.25	64
110	109.3	110.7																			65.25	74
120	119.3	120.7																			75.25	84

Thread d			M14		M16		M20		M24		M30		M36		M42		M48		M56		M64	
l			ls	lg	ls	lg	ls	lg	ls	lg	ls	lg	ls	lg	ls	lg	ls	lg	ls	lg	ls	lg
nominal	min.	max.	min.	max.	min.	max.	min.	max.	min.	max.	min.	max.	min.	max.	min.	max.	min.	max.	min.	max.	min.	max.
16	15.65	16.35																				
20	19.58	20.42	Full																			
25	24.58	25.42	Full		Full																	
30	29.58	30.42	Full		Full		Full															
35	34.5	35.5	Full		Full		Full		Full													
40	39.5	40.5	Full		Full		Full		Full													
45	44.5	45.5	Full		Full		Full		Full		Full											
50	49.5	50.5	Full		Full		Full		Full		Full											
55	54.4	55.6	Full		Full		Full		Full		Full		Full									
60	59.4	60.6	10	20	Full		Full		Full		Full		Full		Full							
65	64.4	65.6	15	25	11	21	Full		Full		Full		Full		Full							
70	69.4	70.6	20	30	16	26	Full		Full		Full		Full		Full		Full					
80	79.4	80.6	30	40	26	36	15.5	28	Full		Full		Full		Full		Full		Full			
90	89.3	90.7	40	50	36	46	25.5	38	15	30	Full		Full		Full		Full		Full		Full	
100	99.3	100.7	50	60	46	56	35.5	48	25	40	Full		Full		Full		Full		Full		Full	
110	109.3	110.7	60	70	56	66	45.5	58	35	50	20.5	38	Full		Full		Full		Full		Full	
120	119.3	120.7	70	80	66	76	55.5	68	45	60	30.5	48	16	36	Full		Full		Full		Full	
130	129.2	130.8	80	90	76	86	65.5	78	55	70	40.5	58	26	46	Full		Full		Full		Full	
140	139.2	140.8	90	100	86	96	75.5	88	65	80	50.5	68	36	56	21.5	44	Full		Full		Full	
150	149.2	150.8			96	106	85.5	98	75	90	60.5	78	46	66	31.5	54	Full		Full		Full	
160	159.2	160.8			106	116	95.5	108	85	100	70.5	88	56	76	41.5	64	27	52	Full		Full	

Thread d			M14		M16		M20		M24		M30		M36		M42		M48		M56		M64	
l			ls	lg	ls	lg	ls	lg	ls	lg	ls	lg	ls	lg	ls	lg	ls	lg	ls	lg	ls	lg
nominal	min.	max.	min.	max.	min.	max.	min.	max.	min.	max.	min.	max.	min.	max.	min.	max.	min.	max.	min.	max.	min.	max.
180	179.2	180.8					115.5	128	105	120	90.5	108	76	96	61.5	84	47	72	28.5	56	Full	
200	199.08	200.93					135.5	148	125	140	110.5	128	96	116	81.5	104	67	92	48.5	76	30	60
220	219.08	220.93													101.5	124	87	112	68.5	96	50	80
240	239.08	240.93													121.5	155	107	132	88.5	116	70	100
260	258.95	261.05													141.5	164	127	152	108.5	136	90	120
280	278.95	281.05													161.5	184	147	172	128.5	156	110	140
300	298.95	301.05													181.5	204	167	192	148.5	176	130	160