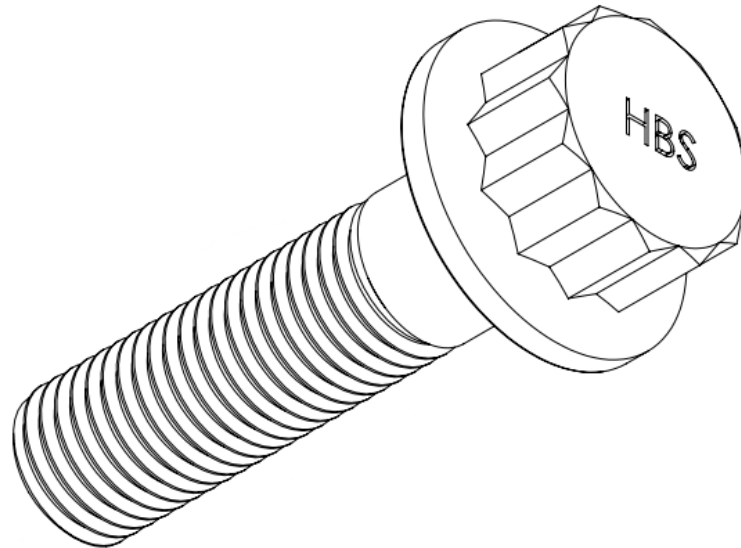
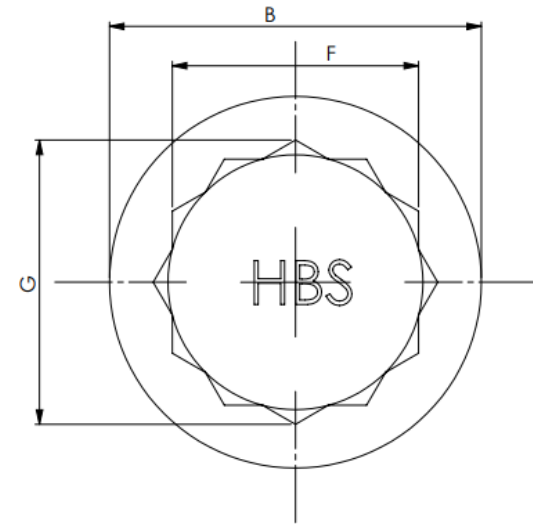
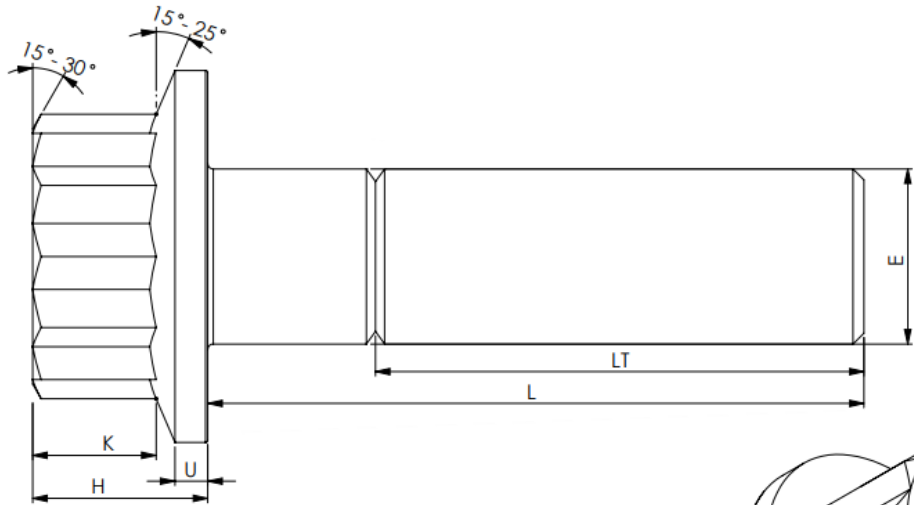


12 Point Flange Bolt

ANSI B1.1 UNC, UNF



- E** : Max. body diameter refers to Nominal size
- B** : Flange Diameter
- F** : Width Across Flat
- G** : Width Across Corner
- H** : Head Height
- K** : Wrench Height
- U** : Flange Thickness
- LT** : Thread Length
- L** : Total Length

Nominal size of the Screw	Body diameter Max refers to Nominal size (E)		Flange Diameter (B)		Width Across Flat (F)		Width Across Corners (G)	Head Height (H)	Wrench Height (K)	Flange Thickness (U)	Thread Length (LT)
	max.	min.	max.	min.	max.	min.	min.	max.	min.	min.	min.
1/4"	0.25	0.2435	0.375	0.365	0.252	0.244	0.278	0.26	0.15	0.058	1
5/16"	0.3125	0.3053	0.469	0.457	0.315	0.306	0.348	0.312	0.18	0.074	1.125
3/8"	0.375	0.3678	0.562	0.55	0.377	0.368	0.42	0.375	0.21	0.095	1.25
7/16"	0.4375	0.4294	0.656	0.642	0.438	0.429	0.489	0.438	0.26	0.109	1.375
1/2"	0.5	0.4919	0.75	0.735	0.502	0.493	0.562	0.5	0.29	0.129	1.5
5/8"	0.625	0.6163	0.938	0.921	0.627	0.618	0.705	0.625	0.36	0.166	1.75
3/4"	0.75	0.7406	1.125	1.107	0.752	0.743	0.847	0.75	0.44	0.2	2
7/8"	0.875	0.8647	1.312	1.293	0.875	0.866	-	0.875	0.51	0.234	2.25
1"	1	0.9886	1.5	1.479	1.000	0.991	-	1	0.6	0.268	2.5
1-1/8"	1.125	1.109	1.688	1.665	1.125	1.115	-	1.125	0.66	0.31	2.750
1-1/4"	1.25	1.224	1.875	1.852	1.252	1.24	-	1.25	0.73	0.35	3.000
1-1/2"	1.5	1.482	2.25	2.224	1.502	1.489	-	1.5	0.87	0.433	3.250